



MASTER LEDtube T8 KVG/VVG

MASTER LEDtube 1500mm HO 18.2W 865 T8

Die Philips MASTER LEDtube KVG/VVG eignen sich hervorragend als Alternative für herkömmliche T8-Leuchtstofflampen am KVG/VVG und ermöglichen erhebliche Energieeinsparungen. Es gibt Ausführungen in drei unterschiedlichen Lichtstromklassen, um auch anspruchsvollen Anforderungen gerecht zu werden: StandardOutput (SO): bis zu 2.000 Lumen | HighOutput (HO): bis zu 3.100 Lumen | UltraOutput (UO): bis zu 3.700 Lumen.

Produkt Daten

Allgemeine Eigenschaften	
Socket	G13 [Medium Bi-Pin Fluorescent]
Nennlebensdauer (Nom)	60000 h
Schaltzyklus	200000X

Lichttechnische Daten	
Farbcode	865 [CCT von 6500 K]
Ausstrahlungswinkel (Nom)	160 °
Lichtstrom (Nom)	3100 lm
Ähnlichste Farbtemperatur (Nom)	6500 K
Farbkonsistenz	<6
Farbwiedergabeindex (Nom.)	83
Restlichtstrom am Ende der Nennlebensdauer (Nom)	70 %

Elektrische Kenndaten	
Eingangsfrequenz	50 bis 60 Hz
Power (Rated) (Nom)	18.2 W
Lampenstrom (max.)	87 mA

Lampenstrom (min.)	79 mA
Startzeit (Nom)	0,5 s
Aufwärmzeit bis 60 % Licht (Nom)	0,5 s
Leistungsfaktor (Nom)	0,9
Spannung (Nom)	220-240 V

Temperaturkenndaten	
Umgebungstemperatur (max.)	45 °C
Umgebungstemperatur (min.)	-20 °C
Lagertemperatur (max)	65 °C
Lagertemperatur (min)	-40 °C
Gehäusetemperatur (max)	55 °C

Dimmen	
Dimmbar	Nein

Mechanische Kenndaten	
Produktlänge	1500 mm

MASTER LEDtube T8 KVG/VVG

Zulassungen und Anwendungseigenschaften

Energieeffizienz-Label (EEL)	A++
Energiesparendes Produkt	ja
Zeichen & Zertifikate	RoHS compliance CE KEMA- KEUR(DEKRA) Zertifikat
Energieverbrauch kWh/1.000 Std.	19 kWh

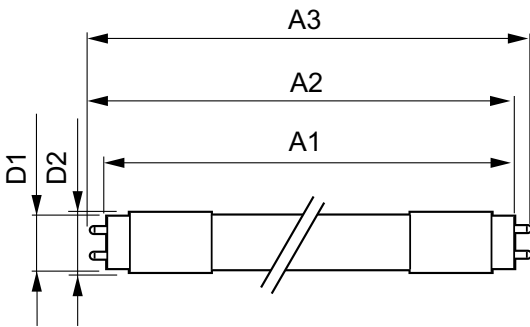
Produktdaten

Gesamt-Produktcode	871869959245500
Bestell-Produktname	MASTER LEDtube 1500mm HO 18.2W 865 T8

EAN/UPC - Produkt	8718699592455
Bestellcode	59245500
Anzahl pro Verpackung	1
Anzahl pro Umverpackung	10
Material-Nr. (12NC)	929001923102
Nettogewicht (Einzelteil)	0,310 kg

Hinweise

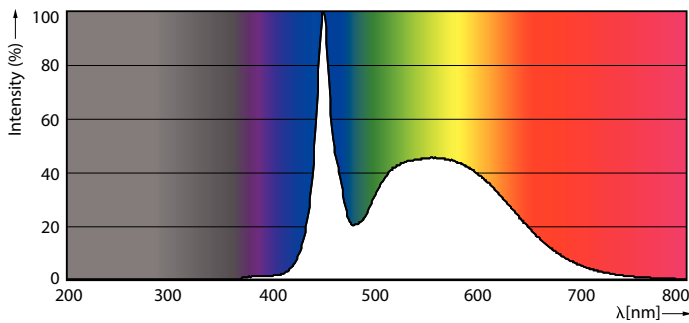
Abmessungsskizzen



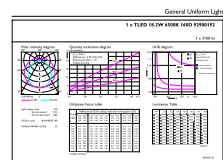
TLED master HE 3100lm 18.2w 5ft 6500k

Product	D1	D2	A1	A2	A3
MASTER LEDtube 1500mm HO 18.2W 865 T8	25,8 mm	28 mm	1498,8 mm	1505,9 mm	1513 mm

Photometrische Daten



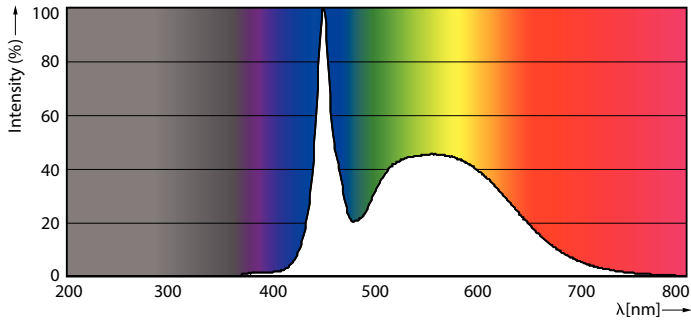
LEDtube T8 MAS HO G13 865



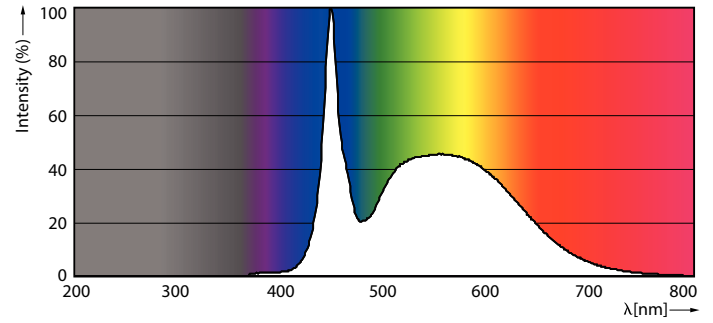
LEDtube MAS HO 18.2W G13 865 16D ND

MASTER LEDtube T8 KVG/VVG

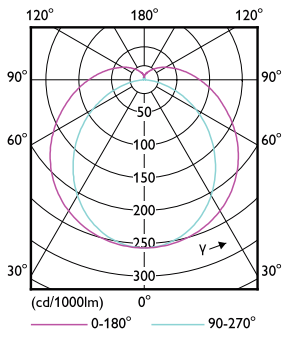
Photometrische Daten



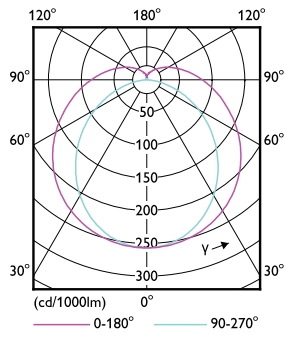
LEDtube MAS HO G13 865



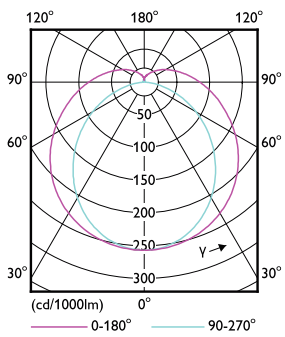
LEDtube MAS HO 12.5W G13 865 16D ND



LEDtube MAS HO G13



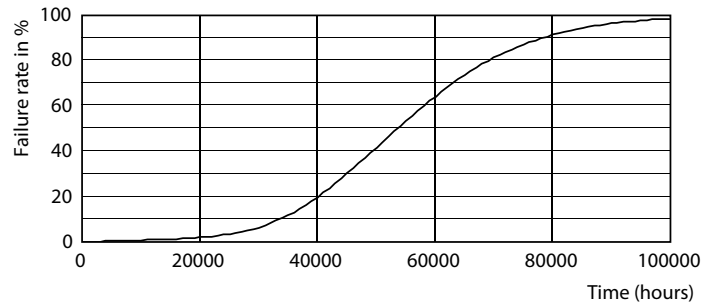
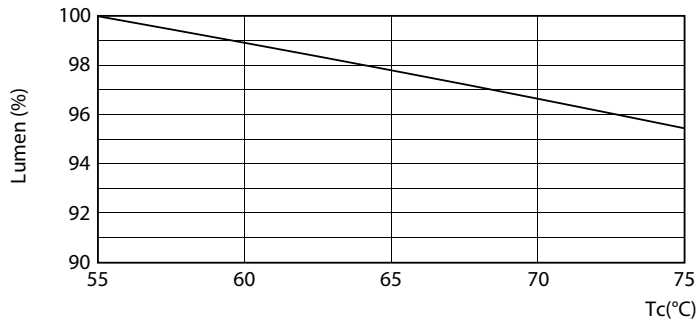
LEDtube T8 MAS HO G13



LEDtube MAS HO 12.5W G13 830 16D ND

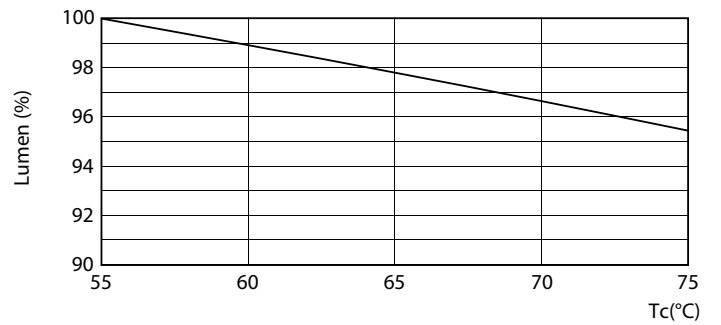
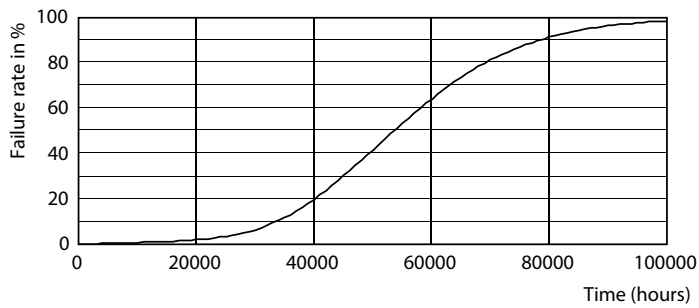
MASTER LEDtube T8 KVG/VVG

Lebensdauer



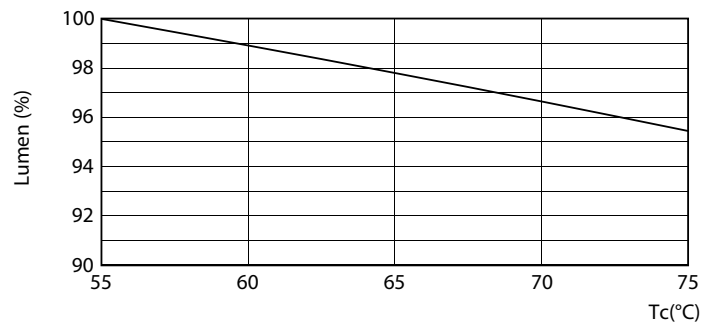
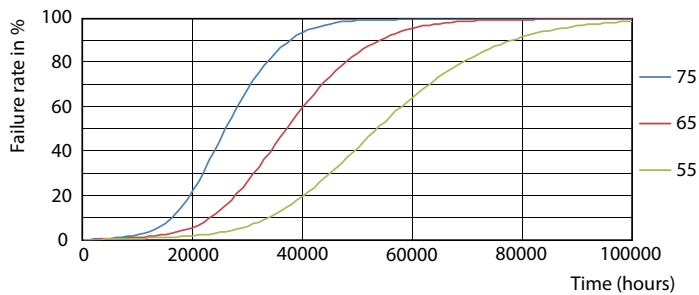
LEDtube T8 MAS HO 18.2W G13

LEDtube MAS HO G13



LEDtube T8 MAS HO G13

LEDtube MAS HO 18.2W G13 830 16D ND

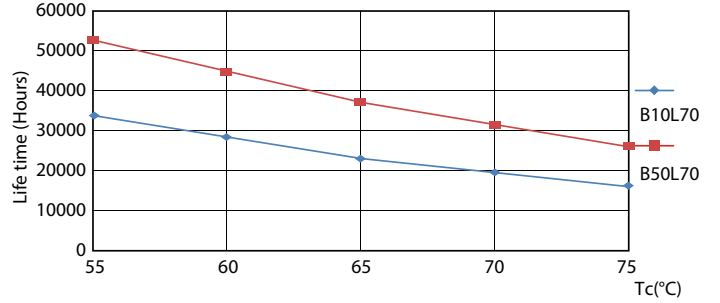
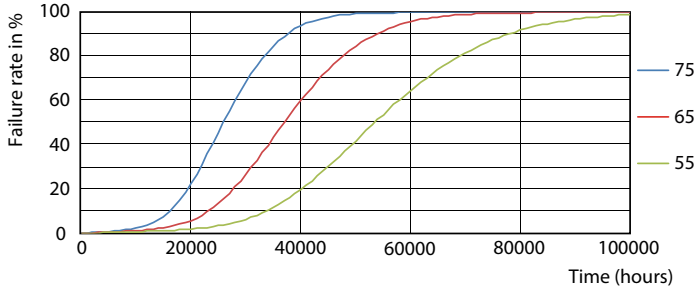


LEDtube MAS HO G13

LEDtube MAS HO 18.2W G13

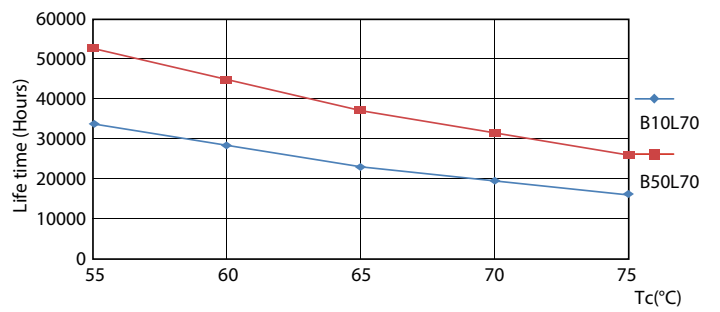
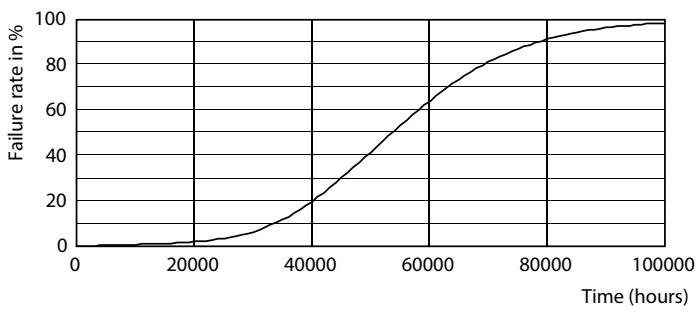
MASTER LEDtube T8 KVG/VVG

Lebensdauer



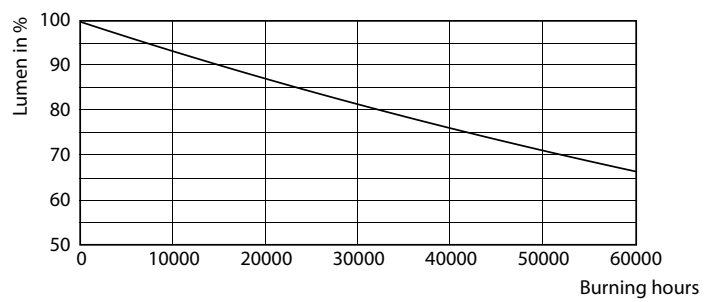
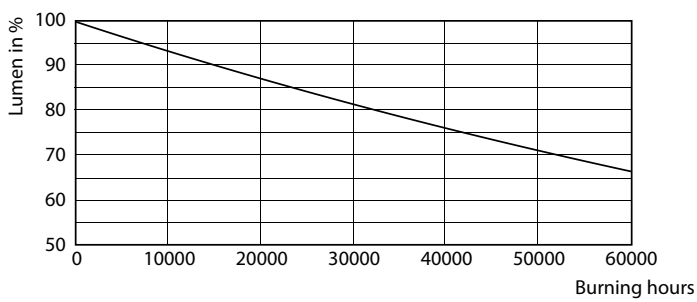
LEDtube MAS HO 12.5W G13 830 16D ND

LEDtube T8 MAS HO G13



LEDtube MAS HO 12.5W G13 830 16D ND

LEDtube MAS HO 12.5W G13 830 16D ND

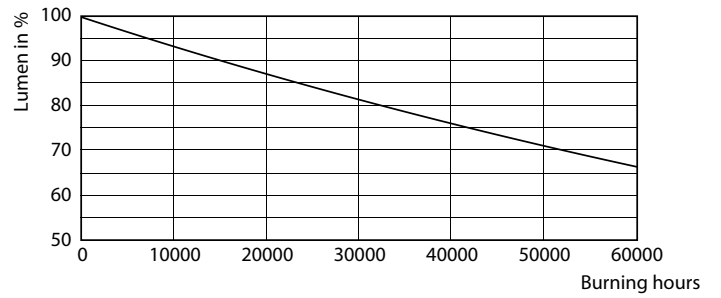
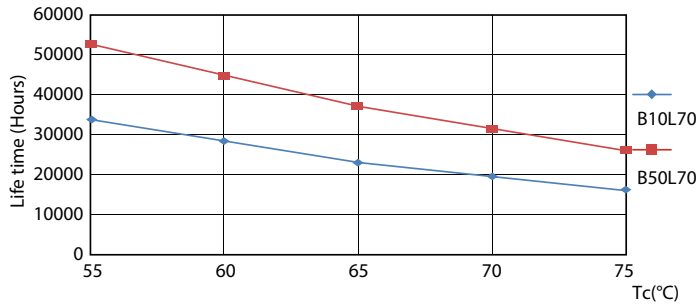


LEDtube MAS HO G13

LEDtube T8 MAS HO G13

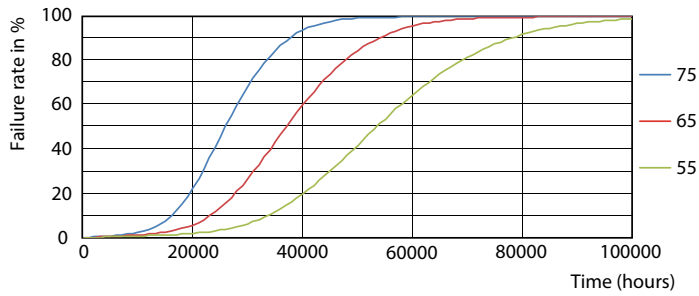
MASTER LEDtube T8 KVG/VVG

Lebensdauer



LEDtube MAS HO G13

LEDtube MAS HO G13



LEDtube T8 MAS HO G13

